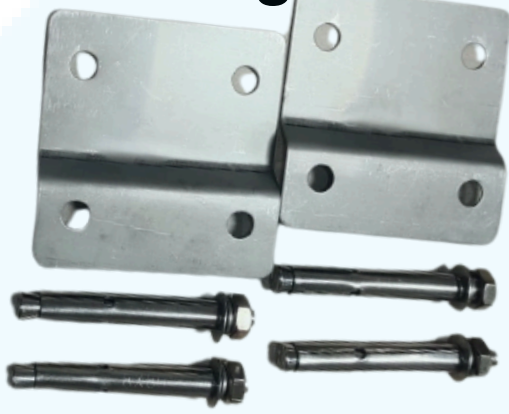


# 5G 4T4R MIMO Patch Panel Antenna



An ISO 9001:2015 Certified Company

## Mounting



## Connectors



## Technical Specifications:

Model No	PPA5G4T4RO
Frequency Range	698~960/1710~2700/3300~3800 Mhz
VSWR	≤1.8
Gain	8Dbi
Horizontal beam width	80±15°, 60±15°, 65±15°
Vertical Lobe Width	75/55/40°
Front-to-back ratio	≥20/≥25/≥20dB
Cross-polar discrimination (dB)	/
Isolation (dB)	≥18/≥20/≥25dB
Impedance	50Ω
Intermodulation IM3 (2×43dBm carrier)	≤-150 dBc
Maximum Power	50 W
Lightning Protection	DC Ground
Operating Temperature	-40~60 °C
Polarization	±45°
Connector	4*4.3-10 Female or 4* N-Female
Connector position	Bottom
Exposed cable size	30(or customer requirement) Cm
Height/width/depth	410*305*84 MM
Packing size	480*370*18 MM
Weight	2KG
Radome Material	ABS
Radome color	White
Mounting	Wall Mounting
Application	5G / 4G /3G /LTE/GSM/ Indoor or Indoor Antenna
Length	420 mm Approx.
Compliances	CE Compliant
ROHS	ROHS compliant

## Product Features:-

- High-Gain Performance
- Easy Installation
- Weather-Resistant Design
- Reduce Errors
- Multiple Input, Multiple Output (MIMO) Capability
- Welcome Customer , Cable and Connector as Requirement

**CALL OR** **+91-8800386366**

Follow Us For More Updates **GLEAMLIGHTINDIA**

Info@gleamlightindia.com www.gleamlightindia.in/gleamlightindia.com/www.gleamindia.com

12B Block -A, Behind Kanishka Garden, Amar Colony Main Rohtak Road Nangloi, New Delhi, Delhi 110041

